



SAFETNet

Security Access on Financed
Equipment Tally Network

An Introduction

What is SafeTnet?

- The Philippine Finance Association (PFA) established the Security Access on Financed Equipment Tally Network (referred to as the SafeTnet) to provide current information on the status of machinery equipment and other assets used as collateral for a loan or lease facility.
- A participating financing institution voluntarily joins and participates in the data exchange by supplying SafeTnet with its list of equipment it owns/leases/finances and shares the information with other participating financed institutions

Objective of SafeTnet?

1. Avoid the incidence of Multiple-Financing.

2. Statistical Information of the Industry.

Partnership

Philippine Finance Association (PFA)

- Project Owner
- System conceptualization, development and enhancement
- Screening and endorsement of eligible subscribers
- Monitor system performance and compliance of Participating institution with reportorial requirements
- Promote the service

BAP Credit Bureau, Inc. (BAP-CB)

- Service Provider
- System development, programming and enhancement
- Day-to-day Operation
- Billing and Collection

Features



Web-based



Real-time Online Search Results



Secured: Firewall protected, 128 bit SSL, User IDs and password, IP Locked, VPN, etc.



**Allows multiple users per Subscriber
(Max - 4)**

Computer Requirements



Internet Ready Computer



Internet Browser (e.g. IE, Mozilla Firefox, Google Chrome)



Spreadsheet (e.g. MS Excel 2007, 2003, Open Office)



Any Printer (Optional)

Submission of Reports



Report Period Covered	Due Date
1 st – 15 th of the Month	16 th to 20 th of the Month
16 th – 30 th /31 st of the Month	1 st to 5 th of the following Month

Mandatory Data for Inquiries

- One ID Number – Serial, Chassis or Engine Number

Inquiry Matching Criteria

ID1	ID2	ID3	Result
Match/Partial	Match/Partial	Match/Partial	Yes
Match/Partial	No	No	Yes
No	Match/Partial	No	Yes
No	No	Match/Partial	Yes

* Partial = matches on 7 consecutive characters w/in the ID.

Alerts on Multiple Entries

- Participating Financial Institutions will be alerted in case another mortgage with a similar identification number is reported to the system.
- Alert via email and SMS.

Sample Alert Email

Dear _____,

Found in the Safetnet database are Chattel Mortgages with similar identification number ad reported by participating banking/financing/leasing institutions.

Attached is a copy of a Safetnet report showing possible duplicate chattel mortgages involving your company.

For your information.

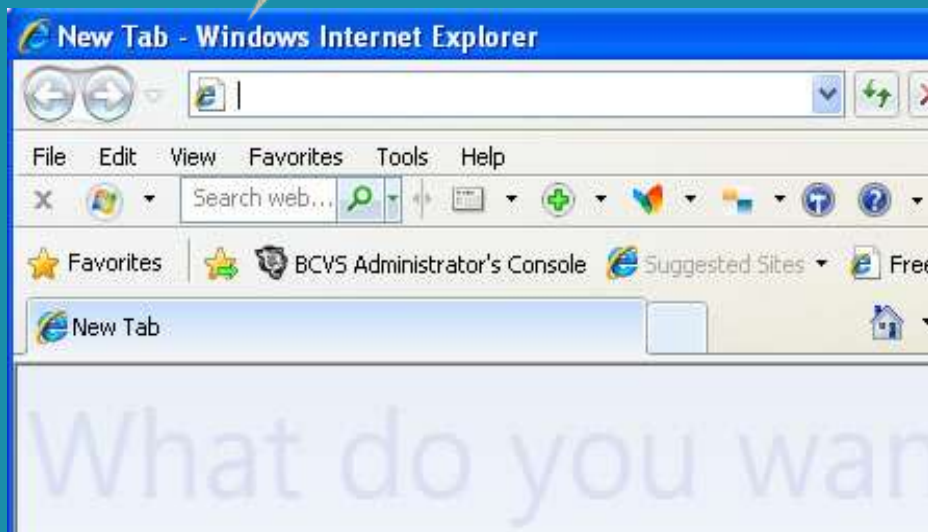
-

Sample SMS Alert

Please check your email. Duplicate Chattel Mortgage.

URLs

<http://safetnet1.bapcb.com>
or
<http://safetnet2.bapcb.com>



<http://safetnet1.bapcb.com>
or
<http://safetnet2.bapcb.com>